

Cellana sp.

BPBM 280812

HAWAII: Mahukona; high wall; shoreline K. Yokoyama  
collected 14 April 1969.

Turbo sandwicensis Pease, 1861

BPBM 280813

This Turban Shell with the "cat's eye" in it, was taken from the waters of Iwahashi Bay on July 20, 1958. I was swimming along in shallow waters (about 2 feet deep) when I saw this shell in a hole. It was all covered with lime when found a good deal of buffing with a iron brush did the trick. On this particular day I went diving by myself.

BPBM 280814

May 29, 1972, Nishimura Bay, Mahukona  
8' water in a crack with a hermit  
crab in it.

BPBM 280814

BPBM 280815

Dead found with nothing in it on May 28  
1963 at Mahukona Wharf in about 5' water

BPBM 280815

BPBM 280816

Found 4/24/65, Big Cave, Upolu, 10' water with a hermit  
crab inside. The outside color of this shell is still good.

BPBM 280817

BPBM 280817

This Turban shell was found at Uniwai, Upolu at a  
bay directly straight down of the Mookini Heiau, on August  
17, 1963 in water about 10 feet deep. A hermit crab was in  
it and was wedged in a crack. Had this shell been alive  
when found, it would have been a perfect shell, and a large  
one. Still, it is a presentable shell.

Cerithium columna Sowerby, 1834

BPBM 280818

Mahukona, 1902, bolo-head.

B

BPBM 280819

mahukona. 1900. nishimura bay

BPBM 280820

Shell found at Puako Bay, Kawaihae, 4' water, by a track  
on Jan. 6, 1968. BPBM 280820

BPBM 280821

12/22/63, old landing, upolu, 5 feet water, on top a reef.

Cerithium mutatum Sowerby, 1834

BPBM 280822

Kahaluu, Kona, Sept. 1960 in shallow waters in a crack, exposed. 5 feet water. BPBM 280822

BPBM 280823

Iwahashi bay, mahukona on Jan, 1962. I went with Kwangi that day. This shell was in a small crack. BPBM 280823

BPBM 280824

2/9/64, nishimura bay, mahukona in a pool about 1 feet water with a crab in it. I speared a large Nohu in about 2 feet of water there. I spotted it from shore when he moved. After spearing it, he threw up a whole hole from his mouth which was fresh as can be. BPBM 280824 + 280825

Cerithium resisticum Pilsbry & Vanatta, 1905

BPBM 280825

→ (see <sup>label w/</sup> C. Mutatum BPBM 280824)

Rhynchoclavis fasciata (Bruguiere, 1792)

BPBM 280826

April 23, 1961, tracking method in about 12' water, at Keouhou bay, kona.

BPBM 280827 (2 labels)

Mahukona lighthouse, sept. 10, 1962. A crab was in this shell. 25 feet water.

995

Cypraea sp. cf. carneola Linnaeus, 1758

BPBM 280828

11-2-86, Solo beach, Mahukona Shoreline  
in Coral rubble. BPBM 280828

Cypraea cernica Sowerby, 1870

BPBM 280829

Nishimura bay, mahukona, shoreline. 11/26/72

Tonna perdriz (continued)

BPBM 281165

Tun shell: Old wharf, mahukona 12'  
water, dead found. Lip area broken  
when found. "Skin" on shell still pre  
sent. 1/22/67. About 2" in length. BPBM  
281165

BPBM 281166

BPBM 281166  
5-27-84, Mahukona wharf, 12  
feet water, dead found. 2 cm, rusty  
Seems an Octopus ate this animal  
because the interior is broken,  
and an Octopus was nearby.  
I really thank God for this  
shell.

Cypraea leviathan Schilder : Schilder, 1938

BPBM 280830

July, 1977, Bolo-head, Mahukona, Shoreline.

BPBM 280831

4-27-86. Bolo-head, Mahukona  
Shoreline. I really thank GOD  
for giving me this shell.

BPBM 280832

12-20-92, Bolo Head Mahukona  
Shoreline. decaying mollusk matter  
still was in shell. I thank GOD  
for giving me this shell.

BPBM 280833

BPBM 280833

8-28-94. Bolo Head, wedged between  
2 large rocks, on shore.

BPBM 280834

2-16-87, Lapa-kahi Mahukona Shoreline

BPBM 280835

Cypraea carneola, Linnaeus: This shell was found at Nishimura  
bay, Mahukona on April 16, 1963 in very shallow waters. (about  
2 feet) It is almost 3" in length. This is a perfect shell  
with hardly no flaws on it. This shell blended itself perfectly  
y with its surroundings, it being near a fungus like growth al  
most matching the color of this shell.

(Continues on backside)

Cypraea leviathan (Continued)

BPBM 280836

BPBM 280836

This Cypraea leviathan was found at Tabrah's place on 1-31-71. A dead specimen when found, it was in a tidal pool after rough water. I really thank God for giving me this beautiful shell.

BPBM 280837

6-30-91, Tabrah's place area, Makulona, on shore, fresh dead. a sub-adult shell.

BPBM  
280837

Cypraea maculifera Schilder, 1932

BPBM 280839

6-22-86, Tabuaheue place, Mahukona 15 feet  
water, dead found. BPBM 280839

Cypraea mauritiana Linnaeus, 1758

BPBM 280840 (2 labels)

This cowry was  
found at Kona during  
the mauna loa erup-  
tion of 1946, at  
Keel, Kona. BPBM 280840

Cowry found in Kona.  
Given to me by my Uncle.  
Date: June 26, 1947

BPBM 280840

BPBM 280841

Cypraea mauritiana: this shell, which is a  
large one (about 4 $\frac{1}{2}$ "") was found at the  
mahukona lighthouse in waters about 4' deep  
It was hiding under a huge rock. Several  
were together but as some were not in too  
good color shape, I left them in the ocean  
November 26, 1935 was the date I found this  
shell. This area, which once yielded Helmet  
shells, (Cassis cornuta) now is barren of  
this shell. Either this shells has some  
sort of intelligence which knows that they  
are being "hunted" or they just aren't there  
period. BPBM 280841

BPBM 280842

Cypraea mauritiana: this shell, which  
is about 3  $\frac{7}{8}$ " in length, was found  
at the Mahukona lighthouse on 3/25/37  
in about 5' water. This is an area  
where there are huge rocks sticking  
out in the water. It was in a crack.  
I thank GOD for this shell.

BPBM 280842



Cypraea mauritiana (continued)

BPBM 280843

Cypraea mauritiana. Shell found at  
Big Cane, Upolu on 7-18-76 in  
about 4 feet water, alive. The shell  
is discolored a little on the top  
portion. Still, it is a nice shell  
and I thank God for it.

BPBM 280843

Conus ebraeus Linnaeus, 1758

BPBM 280968

Dredging site, Kawahae, 8-4-85.

Conus imperialis Linnaeus, 1758

BPBM 280969

April 15, 1902 at big cave, honoipu in 15 feet of water. Two were together, but the larger one was in bad shape so I left it in the ocean. Length: almost 2 $\frac{3}{4}$ " in length. 280969

BPBM 280970

Conus imperialis: found 6/28/64, Haena Point, Kapaa in about 12' water exposed, on top of a reef, alive. BPBM 280970

BPBM 280971

5-3-87, Black point, Mahukona Shores  
BPBM 280971

BPBM 280972

Black Point, Mahukona, 3-2-86, Shoreline.  
BPBM 280972

BPBM 280973

This imperialis cone was found at a place we call bolo-head, mahukona on sept. 22, 1902 in water about 12 feet deep. It housed a hermit crab that was far too small to lug this shell about. I kept this shell for its size and for the easy job of extracting a hermit crab from a shell.

spear-wise, we had a great catch of fish that day. Uhu's, aholehole's, anahulu's, and moi were some of the fishes speared. 280973

BPBM 280974

3-26-86, Bolo-head shoreline, after rough weather

BPBM 280975

Conus imperialis: shell found at the Mahukona lighthouse on 3/17/68 in about 5' water hiding under a ledge. It is a perfect and beautiful shell. BPBM 280975

BPBM 280976

Conus imperialis: 4/2/67, Nishimura Bay, Mahukona 4' water on top of a reef, in a crack. I am going to try to leave the outside of this shell uncleaned to make allowance in comparing. 280976

Cypraea sulcidentata Gray, 1824

BPBM 280838

Found June 13, 1971, near windmill, mahukona dead in a sand pocket about 15' deep. It is a large shell.

BPBM 280844

12-18-76, Red Hill, 15 feet water,  
dead found. BPBM 280844

BPBM 280845

Cypraea sulcidentata: shell found on 2/16/69 in about 6' water dead. It is a large shell. Windmill, a spot between mahukona and kawaihae. BPBM 280845

SH ACCOUNT  
RECE

BPBM 280846

August 25, 1962, big cave bombing range dead when found. A hermit crab was in it. The top of this shell is damaged pretty bad but I am keeping this shell for size.

Cypraea talpa Linnaeus

BPBM 280847

6/22/69, Haena Point, Kapaa, shoreline. Washed up on beach and dead when found.

BPBM 280848 (2 labels)

Kawaihae dredging area march, 19, 1972 shoreline.

Kawaihae dredging area, march 19, 1972, shoreline.

FILE NO.

ASSIGNMENT:

DATE:

Cypraea talpa (Continued)

BPBM 280849

April 18, 1972, kawaihae dredging area found while they were dredging.

BPBM 280850

April 18, 1972, kawaihae dredging area found while they were dredging.

BPBM 280851

Sept. 10, 1972, kawaihae dredging area.

BPBM 280852

BPBM 280852  
dredging site, Kawaihae, August 5, 1984

BPBM 280853

This Cypraea talpa was found at the Kawaihae dredging site on Dec. 25, 1984. It is still a presentable shell in spite of the broken anterior. I really thank GOD for giving me this beautiful shell.

BPBM 280853

BPBM 280854

6-23-85. Kawaihae dredging site.

BPBM 280855

BPBM 280855  
8-11-85, Dredging site, Kawaihae. This shell was all calcified but after cleaning is real nice. I really thank GOD for giving me this shell.

BPBM 280856

This C. talpa was found at the Kawaihae dredging site on 3-5-84. It is a large and beautiful shell and I really thank GOD for giving it to me.

BPBM 280856

This C. talpa was given to me by Lyman Higg on July 19, 1968 and was found in Oahu waters with the aid of an eagle lung. It is a large and beautiful shell. It was found about 6/82. BPBM 280857

BPBM 280857

Cypraea tessellata Swainson, 1822

BPBM 280858

8-2-87 dredging site, Kawaii

BPBM 280859

6-23-91. Black Point, Makohoua  
Shoreline in porites Coral rubble on shore.

BPBM 280859

BPBM 280860

4-27-86 - Bolo Head, Makohoua, Shoreline

Cypraea tigris Linnaeus, 1758

BPBM 280861

Cypraea tigris: This shell, which is about 4 1/8" in length, was found at Mrs. Bond's place at Puako, Kawaihae on August 27, 1966 in about 8' water alive & upside down. This shell is finely spotted & marred only by a "scar" at the center of the shell. We went with my car that day. The decision to go was made that morning at about 8:30 a.m. Even then, "tracks" were still visible in the water and we got some maculata. I got a beautiful, 5 1/2" Terebra aureolata that day. The shells were around an area we call Wishard's place.

BPBM 280861

BPBM 280862

BPBM 280862  
Cypraea tigris: this shell, which is a little over 4 inches in length, was at Wishard's reef, Puako, on 5/4/69 in water about 13' deep, exposed in a rock channel. It was resting on sand and it really surprised me to see the shell where it was. I really thank GOD for giving me this beautiful shell that day.

Cypraea tigris (Continued)

BPBM 280865

BPBM 280865

This *Cypraea tigris*, which is 4" in length, was found at Red Hill, Mahukona on 10-5-75, in a crack in about 6' water, near shore. Actually I spotted this shell on 6-15-75 in the same crack but it was wedged so tightly in a hole that I couldn't get it out. Today it was out of the hole but in the same crack, where also there were no *C. murina* in the crack last, today there were 4 of them. I kept 1. I really thank GOD for giving me this shell.

BPBM 280866

This *tigris*, which is about 4  $\frac{3}{8}$  inches in length, was found a little past Dr. Tabrah's place, on top of a small reef in about 15 feet water, in a small crack, on 12-5-76. I really thank GOD for giving me this shell that day.

BPBM 280866

BPBM 280867

This *cypraea tigris*, which is about 4  $\frac{1}{8}$  inches in length, was found near windmill, mahukona on top of a small reef. From this reef, the depth drops suddenly. This is a beautiful shell in spite of the top being damaged, due I believe to rough weather or it being wedged between something. I really thank GOD for giving me this shell on 12/26/71.

BPBM 280867

Cypraea tigris (Continued)

BPBM 280868

This tigris, which is about 4 1/2 inches in length, was found near Windmill, Mahakona on August 15, 1976 in about 15' water. 3 were banded all together, and was a beautiful sight to see. I really thank God for giving me these shells that day.

BPBM 280868

BPBM 280869

This tigris, which is about 4 inches in length, was found at Windmill, Mahakona on 11-6-77, in about 12 feet water, on top of a large rock. Although light colored, it is a beautiful shell and I really thank God for giving me this shell.

BPBM 280869

BPBM 280870

From the collection of Mr. Pavao a school teacher. Given to me on 6/9/68. Found on the Island of Ponape, one of the Caroline Islands. The tigris there, although small, seems to be terrifically abundant. I was impressed with his many species of shells. BPBM 280870

Cypraea sp.  
BPBM 280871

3-1-92, Small boat harbor, Kawaikohala, Shoreline.

FILE NO:

ASSIGNMENT:

REGIONAL HOUSE  
ARCHIVAL PRESERVERS

DATE:



Cymatium (Cymatium) nicobaricum  
(Roeding, 1798)

BPBM 280872

This nichobar triton shell was found at Kana-  
luu, kona on dec. 20, 1901 in very shallow waters  
and housed a hermit crab. The size of this shell  
made me pick it up and take it home. Except for  
the interior, this shell is still in great shape.

BPBM 280873

Cymatium nicobaricum: found 6/26/66, Big  
Kiawe, Mahukona 8' water, exposed & upside  
down. It is about 2 1/2" in length.

BPBM 280874

Lapa-Kahi shoreline, June 1986 dead found.

BPBM 280875

4-5-87, Lapa-Kahi Mahukona shoreline

BPBM 280876

BPBM 280876  
5-8-77 Nishimura Bay  
Mahukona, 6 feet water,  
hermit crab inside.

BPBM 280877

Although dead found, the operculum of  
this shell was right beside it. 10/10/71  
in about 8' water. Mahukona wharf area.

Distorsio anus (Linnaeus, 1758)

BPBM 280878

BPBM 280878  
7-6-74, Dry Bay, Mahukona  
6' water, alive and upside down.

BPBM 280879

BPBM 280879  
Kawaihae dredging site, January 1970

BPBM 280880

Kawaihae dredging site, 11-22-54.  
BPBM 280880

BPBM 280881

Distorsio anus: found 5/2/63, mahukona lighthouse  
in 6 feet water with a hermit crab in it. Point side  
has hole by it. Outside was all covered with lime.

Bursa butonia (Gmelin, 1791)

BPBM 280882

7-10-85, dredging site,  
Kawaihae. BPBM 280882

BPBM 280883

Found 12-11-88, Black point,  
Mahukona. I believe aqua hungry  
people brought this shell to shore.  
It was under dirt in a dirt road  
with only the aperture portion exposed.  
I really thank GOD for giving me  
this rare shell. BPBM 280883

Bursa granularis (Röding, 1798)

BPBM 280884

5/4/69, Wishard's place, Kawaihae, in  
about 2' water, with a hermit crab in  
it. BPBM 280884

BPBM 280885

November 3, 1974, a little past  
Mahukona in about 6 feet  
water, alive and upside down  
when found. BPBM 280885

BPBM 280886

B. affinis: found a little past Iwahashi bay, Mahukona on  
2/21/65 10' water with a hermit crab in it. The color is  
faded a little. BPBM 280886

BPBM 280887

Red Hill, Mahukona,  
4-24-77 after rough  
weather, Shoreline. BPBM 280887

Bursa rosa (Purvis, 1811)

BPBM 280888

BPBM 280888  
Kawashoe dredging site, Jan. 1970.

Casmaria erinaceus Kaloomodix (Melvill, 1883)

BPBM 281174

BPBM 281174  
This striped helmet shell  
was found at Ikaika Bay,  
Mahukona on Sept. 23, 1974 in  
about 12' water fresh dead.  
I really thank God for giving  
me this beautiful shell.

BPBM 281175

7-10-83, Mahukona wharf area  
20' water, hermit crab inside. I really  
thank God for giving me this shell.  
BPBM 281175

BPBM 281176  
↑

BPBM 281176  
This shell was found by Joe Sano on June 13, 1946 at the Molasses  
wharf at Mahukona. It was in deep waters and it was found in a hole. The  
animal living in it was dead when this shell was found, but it must have  
been only recently as the shell is in great shape, in color and in luster

BPBM 281177

Windmill, Mahukona, 20 feet water,  
fresh dead when found. July, 1978.  
BPBM 281177

BPBM 281178

BPBM 281178  
August 22, DTG, Bombing  
Range Upolu, 6' water with  
a hermit crab in it.

~~Cas~~ Casmaria ponderosa (Gmelin, 1791)

BPBM 281167

8-23-87, *Madaya, Sika, Kusaibae*  
BPBM 281167

BPBM 281168

June 1982, small Boat Korba, Kusaibae.  
BPBM 281168

BPBM 281169

This striped helmet shell was found while on a spear fishing trip. It was found at a place we call Big Bay, mahukona in about 15' water on January 16, 1960. The shell was empty when found. The group that went were L. Salie, S. Cazimero, I. Higa and myself. An unusual occurrence was Samsom's spearing of 4 big moi and a mullet.

BPBM 281169

BPBM 281170

8-12-79, Bolo-head, Mahukona, 8 feet water, wedged in a crack with a hermit crab inside.  
BPBM 281170

BPBM 281171

Found 5/30/64, Nishimura Bay, Mahukona dead found. About 8' water.  
BPBM 281171

BPBM 281172

12-28-80, Tabrah's place, Mahukona shoreline, dead found.  
BPBM 281172

BPBM 281173

8-10-86, Tabrah's place, Mahukona, shoreline  
BPBM 281173

Thais amigera (Link, 1807)

BPBM 280912

Thais affinis: found near Bolo-Head, Mahukona, on a reef on 2/19/69, 8' water, alive. BPBM 280912

BPBM 280913

Found near Bolo-Head Mahukona, 8' water on 2/19/69, alive. BPBM 280913

BPBM 280914 (2 labels)

Thais affinis: shell found a little past Iwahashi Bay, Mahukona on 8/26/67 in about 5' water alive. A pair of these shells were found. I will try to leave the outside uncleaned. BPBM 280914

Thais affinis: shell found a little past Iwahashi Bay, Mahukona on 8/26/67 in about 5' water alive. I found 2 of these shells in a small crack. I will try to leave the outside of this shell as is. BPBM 280914

BPBM 280915

Sept. 16, 1962, at Mahukona lighthouse in 5 feet water. A hermit crab was in it. It is about 2 1/2" long and is still in good condition. BPBM 280915

BPBM 280916

8/18/68, Nishimura Bay, Mahukona, 8' water, in a crack, alive. BPBM 280916

BPBM 280917

Thais affinis: I found this shell at Red Hill, a place between Mahukona and Kawaihae on March 21, 1964 in water about 15 feet deep. It was wedged in a crack with only its behind visible. It is about 2 1/2" in length. The meat of this animal I never hesitate to eat. This shell was on a reef. BPBM 280917

Thais amigraea (Link, 1807) (continued)

BPBM 280918

5-19-79 - Red Hill, Mahukona, 6' water,  
near shore. BPBM 280918

BPBM 280919

Thais affinis: length, about 3" long. Found at the shack, a spot halfway between mahukona and kawaihae on July 5, 1964 in water about 6 feet deep, exposed and on top of a large boulder. Two were together. An unpleasant experience for me was having been stung by a portuguese man of war. It left a half moon mark on my right shoulder and the pain was kind of heavy. BPBM 280919

BPBM 280920

Thais affinis: This shell was found at Wailea Beach area a spot we call Wishard place on 11/30/68, in about 5' water alive. The water that day was rough and dirty. I went there because I had to take my mother to Waimea so she could go down to Honolulu to attend her sisters funeral. I parked my car near the road to avoid cars inside the beach area. It was a mistake for I had my wallet with about \$ 8.00 in it stolen. BPBM 280920



Mitra (Mitra) Mitra (Linnaeus, 1758)

BPBM 280921

Sept. 13, 1960 at a place a little bit back of Parker ranch beach at Kawaihae. BPBM 280921

BPBM 280922

BPBM 280922  
12-29-85 - Small boat harbor, Kawaihae, Shoreline.

BPBM 280923

Sept. 10, 1960 at Wishard's place, Kawaihae. It was picked up by Lyman and given to me.

BPBM 280924

This episcopal miter was picked up at Nishimura bay on August 14, 1960 in about 15-20 feet of water. BPBM 280924

BPBM 280925 (2 labels)

Found at Nishimura bay, Mahukona by a track in Oct. of 1960 in about 20 feet of water. BPBM 280925

BPBM  
280925

195

Mitra (Dipaphus) edentula Swainson, 1823

BPBM 280926

3-9-86, small boat harbor, Kawaihae after rough weather. I thank GOD for giving me this shell! BPBM 280926

BPBM 280927

3-1-92, small boat harbor, Kawaihae, Shoreline. BPBM 280927

BPBM 280928

Kawaihae small boat harbor 6-78  
Shoreline. BPBM 280928

Mitra (Dibaphus) edentula (continued)

BPBM 280929

<sup>BPBM 280929</sup>  
dredging site, Kawaihae, 4-79

BPBM 280930

4-20-86, Taboaks place, Mahukona shoreline

Mitra (Strigatella) pellisserpentis Reeve, 1844

BPBM 280931

dredged shell, Kawaihae, 10/12/60.

BPBM 280932

#25, Spencer park, Kawaihae, 12/28/61.

BPBM 280933

#7, Kapakahi, Upolu, 4/16/61.

BPBM 280934

Umiwai, Upolu, 5/62.

Mitra (Nebularia) ferruginea Lamarck, 1811

BPBM 280935

June 17, 1962, Kapaa park. It housed a hermit crab in it.

BPBM

280936

10/7/63, kapaa park, 10 feet water.

BPBM 280937

7/4/66, Kapaa park, 8' water dead with a hermit crab inside it.

BPBM 280938

Kawaihae dredging site, July 21, 1962. Diane, Carol, and my mother made the trip. One of the girls found this shell

BPBM 280939

Kawaihae dredging area 9/17/72, alive.

BPBM 280940

Mitra ferruginea: found 2/29/64, mahukona lighthouse in 6' water in a crack with a hermit crab in it.

BPBM 280941

4/28/68, mahukona, tidal pool, crapped

BPBM 280942

This mitre was picked up at old landing on August 17, 1960.

BPBM 280943

6/2/68, Small, Cave upolu, in a small tidal pool with a hermit crab in it.

Pterygia crenulata (Gmelin, 1791)

BPBM 280944

Kawaihae dredging area,  
Shoreline on Feb. 1960.

BPBM 280945

1-1-87, Oolo Head, Makuhona, Shoreline

BPBM 280946

~~1-1-87, Oolo Head, Makuhona, Shoreline~~

BPBM 280947

8-1-93. Oolo - Head Shoreline.

BPBM 280948

8-1-93 Oolo - Head Shoreline.

BPBM 280949

Lapa-Kahi state park, Shoreline,  
May 11, 1975

BPBM 280950

4-20-86, Lapa Kahi, Makuhona, Shoreline.

BPBM 280951

9-7-86. Lapa Kahi, Makuhona, Shoreline.

BPBM 280952

9-18-88, Lapa Kahi Shoreline.

BPBM 280953

9-25-88 - Lapa Kahi Shoreline.

BPBM 280954

11-20-88 - Lapa Kahi Shoreline.

BPBM 280955

1-8-89, Lapa Kahi Shoreline.

BPBM 280956

11-19-89, Lapa Kahi Makuhona  
shoreline.

BPBM 280957

10-27-91, Lapa Kahi, Makuhona Shoreline

BPBM 280958

9-6-92, Lapa-Kahi Shoreline. Fresh dead.

Pterygia crenulata (Gmelin, 1791) (Continued)

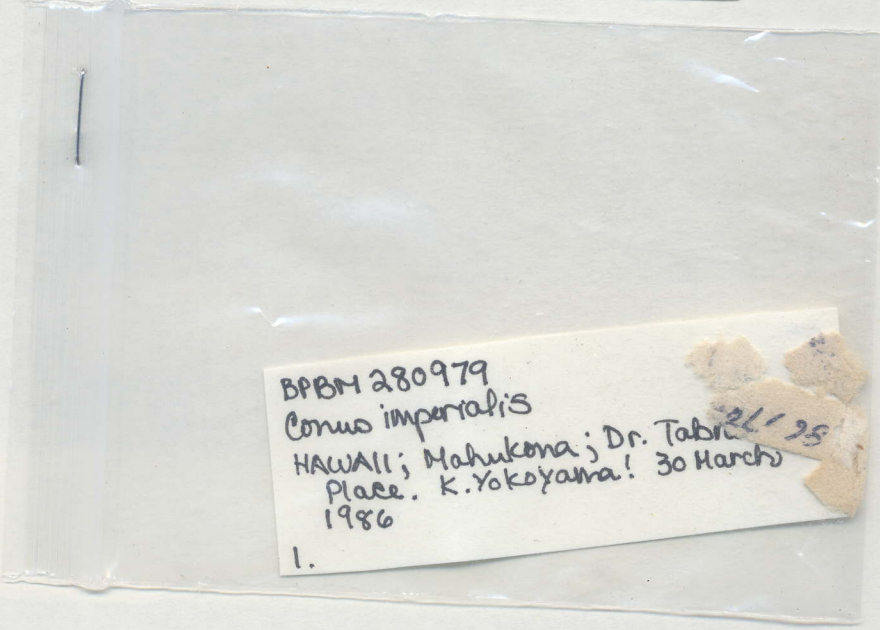
- BPBM 280959 Black Point, 8-25-79, Shoreline.
- BPBM 280960 4-18-86, Black Point, Makuhara Shoreline
- BPBM 280961 3-20-77, Tabrah's place, shoreline.
- BPBM 280962 Tabrah's place, 6-82, shoreline.
- BPBM 280963 9-15-85, Tabrah's place, shoreline.  
After tough weather
- BPBM 280964 Tabrah's place, Makuhara 9-7-86, Shoreline.
- BPBM 280965 10-6-86, Tabrah's place Makuhara Shoreline
- BPBM 280966 1-17-88, Tabrah's place, Makuhara shoreline
- BPBM 280967 Windmill, Makuhara - 12-26-82,  
Shoreline after tough weather.

Conus imperialis (continued)

BPBM 280977 May 7, 1972, nishimura bay, mahukona in about 5' water, alive. BPBM 280977

BPBM 280978 Conus imperialis: shell found at Old Wharf, Mahukona on 4/16/67 in about 12' water alive and exposed.

BPBM 280979



BPBM 280980

280980  
3-26-78, Mahukona wharf, 12 feet under, with a hermit crab inside.

BPBM 280981

Windmill, Mahukona, 8 feet water, dead found.  
Feb. 10, 1985. BPBM 280981

BPBM 280982

Conus imperialis shell found at Big Cave, Upolu in about 10' water, with a hermit crab in it. 6/13/65. 280982

FILE NO:

ASSIGNMENT:

DATE:

Conus imperialis (Continued)

BPBM 280983

280983  
This Imperial Cone was taken at a place near the Coast Guard that we call "Kapa-kahi" point on March 5, 1960. Kwangi and I had gone diving by Old Landing and we decided to go here for our second dive. Kwangi got three Imperial cones there and I found just this one

BPBM 280984 (Missing)

~~BPBM~~

BPBM 280985

This Imperialis cone was found at old landing on Oct. 6, 1962 on top of a reef and was wedged in a crack. BPBM 280985

BPBM 280986

Conus imperialis: This shell, found dead with a hermit crab inside it, was found at Old Landing, Upolu on 1/29/67 in about 15' water. The lip portion and the interior is damaged somewhat. BPBM 280986

Conus leopardus (Roeding, 1798)

BPBM 280987

Conus leopardus: shell found at Hapuna Beach, Kawaihae on 2/4/69 in about 18' water, half exposed on sand. BPBM 280987

BPBM 280988

This large leopardus cone was found at puako bay, kawaihae on may 12, 1902 in waters about 20 feet deep. It is at least 5½" long. I went with Kwangi and mesa takamori that day. BPBM 280988

BPBM 280989

Conus leopardus: this shell was found at Makalawena, Kona on Sept. 4, 1966 in about 3' water alive. It was in a small sand patch. This specimen is about 4 5/8" in length and is still a good condition shell.  
In observing this area for shells, at 1st glance, the area seems excellent. But when we went into the water very few shells were seen. Either the shells were wiped out, or they were living in waters further out. At night I saw hardly any (hermit shells)  
BPBM 280989

BPBM 280990

This lettered cone was found at Big Bay, Mahukona on sept. 7, 1900 by Isamu Higa and was given to me by him. BPBM 280990

BPBM 280991

2-21-83, Bolo-head, Mahukona shoreline in coral rubble after rough weather. BPBM 280991

BPBM 280992

4-13-86, Bolo head, Mahukona, Shoreline



Conus leopardus (continued)

BPBM 280993

This leopard cone was found on 12/10<sup>02</sup> at Mahukona wharf in water about 18 feet deep. The shell was partly exposed due to rough and dirty water. It is a beautiful shell and a perfect one. In cleaning it I took extra care not to damage the lip. It paid off. It is about 3 inches in length. I went alone this day. This cone when young has a waxy substance underneath the natural covering. BPBM 280993

BPBM 280994

Conus leopardus: this shell was found at Mahukona wharf on Jan. 23, 1966 in about 10' water with a hermit crab inside it. Two same size shells were together and when I went down to get them, one was this shell and the other was a *C. imperial* which I left back in the ocean. This is a dark specimen, marred only by a broken lip in the middle and some lime substance left in the interior by the crab. BPBM 280994

Conus marmoreus Linnaeus, 1758

BPBM 280995

2-8-87, Black Point Mahukona Shoreline.

BPBM 280996

July 18, 1993. Black Point, Mahukona Shoreline

BPBM 280997

March 8, 1985, Polo-head Shoreline, Mahukona  
BPBM 280997

BPBM 280998

12-9-84, Keawe-ida, Maha-  
Kona, Shoreline. I really thank  
GOD for this shell. BPBM 280998

BPBM 280999  
(continued on  
the other side  
of this label)

BPBM 280999

Conus marmoreus: Length: about 3 inch  
es. This shell was found between Nishi-  
mura bay and the mahukona blowhole on  
Jan. 19, 1964 in water about 15 feet  
deep. This shell was all exposed and  
on the side of a rock. The dirty sand  
and rubble which this species is accus-  
tomed with, was located farther out  
from shore. I believe rough water made  
this shell to be where it was. Undernea  
th this shell was a old worn cone shell  
and a cylindra crenulata with a hermit  
crab in it. This marmoreus could have  
been caught in the act of feeding on  
this hermit crab. I don't know for sure

Of the four live marmoreus that I  
have picked up from the ocean depths,  
this was the 1st species that I knew  
from observing at the top that this  
was the species marmoreus. All the oth  
ers were either buried in the sand, or  
in deeper water, or covered with lime  
like growth. It also account for the  
worn out appearance of the shell itself  
and its lack of gloss. Still, it is a  
pretty shell.

Conus marmoreus (Continued)

BPBM 281000

Conus marmoreus: this shell which is about  $2 \frac{3}{4}$  inches in length, was found at the mahukona lighthouse on Oct. 16, 1966 in about 6' water alive. The lip portion was broken thus when found. It seemed to me that this shell was heading for a rock which was to be its hiding place. But for some reason, (maybe day light coming) it did not quite make it. Despite its broken lip the overall condition of this shell is very good. The pinkish color which almost always fades with time, is still evident on this shell. I thank GOD for giving me this shell. BPBM 281000

BPBM 281001

BPBM 281001  
This marble cone was found at old wharf, mahukona on march 18, 1902 in very shallow waters. (about 8 feet) The water that day was pretty rough and dirty.  $\frac{2}{3}$  of this shell was hidden in the sand. Only the shallow depth in which this shell was in made me go down and pick it up. It looked more stone than shell. It is almost 3" in length and is a perfect shell. It was alive when found. Kwangi and I made the trip.

BPBM 281002

Conus marmoreus: this shell which is about  $2 \frac{1}{8}$ " in length, was found at the Old Wharf area, Mahukona on Oct. 30, 1966 in about 15' water, half exposed. I believe rough weather exposed this shell. Otherwise, it would have been well concealed in the sand. I say this because very little sand was around this area, where normally, sand is plentiful there. This is a beautiful colored shell, one that I am proud to have in my collection. I thank GOD for this beautiful shell.

BPBM 281002

Conus marmoreus (Continued)

BPBM 281003

This marmoreus cone was found at Old Wharf, Mahukona on 11/20/66 in water about 6' deep in a rocky area. This shell seemed to dig in the rock as much as he could. It was all exposed. I believe rough weather moved its natural protection away, it being the sand. I am going to try to leave the shell uncleaned, for very little foreign matter is on this shell. I thank GOD for this beautiful shell. It was truly a beautiful sight to see, in the water. This is a perfect juvenile specimen. BPBM 281003

BPBM 281004

BPBM 281004

Conus marmoreus: this shell was found at Old Wharf, Mahukona on 4/16/67 in about 6' water, alive. It is still a good condition shell. I believe this shell was where it was a long time. Two of them were together and the other was pretty badly worn on the outside. Still, I kept it, because of its beauty & rarity, here in Kohala, I believe rough weather & shifting sands made these shells, visible. I thank GOD for it.

BPBM 281005

Conus marmoreus: this shell, which is badly scarred & eaten away, was found at Old Wharf, Mahukona on 4/16/67 after a period of rough weather in about 6' water, alive. I was surprised to see it where it was. In fact two of them were together. Judging from the condition of this shell I believe they were there a long time and only the rough weather and the consequent shifting sands made these shells visible. I thank GOD for this shell.

BPBM 281005

Conus marmoreus

BPBM 281006

BPBM 281006  
Iwahashi Bay, Mahukona, shoreline, 3/15  
70, after a period of rough weather.

BPBM 281007

February 7, 1971, Shoreline,  
after rough weather at  
a little past Dr. Tabrah's  
place, Mahukona.  
BPBM 281007

BPBM 281008

5-4-86, Tabrah's place, Mahukona, Shoreline

BPBM 281009

8-11-86, Tabrah's place, Mahukona, Shoreline.  
BPBM 281009

BPBM 281010

2-22-87, Tabrah's place, Mahukona. I thank  
GOD for giving me this shell. BPBM  
281010

BPBM 281011

Conus marmoreus: this shell was found  
at Old Landing, Upolu on April 11, 1964  
in water about 8 feet deep. It was on  
top of a reef in a small crack. The whole  
shell was exposed, and a sight to see  
in the water. Length: a little over 2½"  
and a perfect shell. Alfonso Mitchell  
and myself made the trip. BPBM ~~281011~~ 281011

Conus pulicarius Swaso in Bruguiere, 1792

BPBM 281012

7-19-87, Kawaikae dredging site  
BPBM 281012

Conus spiceri Bartoch & Rehder, 1943

BPBM 281013

BPBM 281013

This Conus spiceri was found by Isamu Higashi in 1960. He found it at Keouhou Bay, Kona. It is dead found, and a hole under it seems to be made by a predator. I had found no spiceri at that period of time and because he did not want it, I asked him for the shell. It is a large shell, almost 3 inches in length. It was not until May 12, 1962 that I found my 1st live collected C. spiceri at 69er heads puako. I really thank JEHOVAH for this great find.

BPBM 281014

Conus spiceri: this shell was found at Keouhou Bay, Kona on June 12, 1966 in about 12 feet water alive and half exposed near rocks on a sandy area. It is about 4" in length. Of the 3 spiceri that I have found so far, I believe this is the best condition one. Although the water that day was good, very few tracks were seen in the water. I believe the area is being worked at pretty hard. I thank GOD for giving me the two spiceri cones that day. It was a thrill.

BPBM 281014

Conus striatus Linnaeus, 1758

BPBM 281015 (Label stuck in shell)

BPBM 281016 <sup>BPBM 281016</sup>  
Kapaa park, January, 1970, 18 feet water,  
dead found.

BPBM 281017

Found at the dredging area of  
Kawaihooe harbor on November 28,  
1976, Shoreline. It is still in good  
Condition BPBM 281017

BPBM 281018

Conus ~~textile~~ <sup>striatus</sup>: shell found at Mrs.  
Bond's place, Puako, in about 12' water  
fresh dead with nothing in it. The skin  
like covering on this shell was still  
intact when found. 6/30/68. BPBM 281018

BPBM 281019

<sup>BPBM 281019</sup>  
This striatus cone was found  
at Keawe-aka on 6-3-84  
in about 8 feet water with  
a hermit crab in it. The  
tip was damaged when found  
but is still a good con-  
dition shell. I really thank  
God for giving me this shell

BPBM 281020

This stratus cone was found at kahaluu;  
kona on dec. 20, 1901, while fanning. It  
was under a few inches of sand. It is  
almost 4 inches in length and was alive  
when found. BPBM 281020

Conus striatus (continued)

BPBM 281021

BPBM 281021  
Conus striatus: shell found at Windmill, a spot between Mahukona and Kawaihae on 5/19/69 in water about 15' deep, with a hermit crab in it. Although the lip is terribly damaged, the "skin" covering this shell was still present with no lime coating on it. The interior is still good

BPBM 281022

5-1-83, Mahukona Wharf, 18' water, with hermit crab in it. I really thank GOD for giving me this beautiful shell. BPBM 281022

BPBM 281023

BPBM 281023  
This Conus striatus was found at the Mahukona Wharf area in about 18' water with a hermit crab inside it, on April 10, 1960. On this day, Kwangi found a Cassis cornuta that was a perfect shell to me. The top of the shell seems to have lost some of its color and the front lip portion is broken, probably due to the crab's wanderings. Still, considering its rarity and my 1st find of this species, I am very happy to have found this shell. The front portion of the lip had a fragile growth extension. In cleaning I broke this fragile portion. I put it back with cement.

BPBM 281024

(See back of label for more notations.

RKK 18 Jan 2006)

28 This Striatus cone was found at a place we call bombing range, Upolu on July 28, 1962 in a sand pocket about 25 feet deep. It is a beautiful shell in spite of a growth crack at the top. It was dead when found and no crab was in it. A light skin covered it. It could be classed alive found. Only the operculum is missing. I had a great catch of fish and octopus that day. I went with Hiroto Kawasak sam sanemitsy, his two daughters and some other people. Alfonso Mitchell was my diving partner. BPBM 281024



Conus striatus (Continued)

BPBM 281138

Conus striatus? this shell was found at Kapa-kahi Upolu on July 10, 1963 while spear fishing in about 15' water, alive. Half of the shell was exposed. From above I thought it was a broken shell but I went down for it anyway. It was near a flat reef. with sparse sand and lots of loose stone. This shell I believe could not dig down any farther or else rough weather probably exposed the top of the shell. I thank GOD for giving me this shell. It is about  $3\frac{1}{2}$ " long. The "skin" covering & protecting this shell was light. I thought of leaving this covering. But I couldn't do it. BPBM 281138

BPBM 281025

Conus striatus: this shell which is about  $4\frac{1}{2}$ " in length, was found at Old Landing, Upolu on 10/3/64, in about 15 feet water with a hermit crab in it. This shell is dark and beautiful and was on a flat area with hardly any stones or coral around. The shell was resting in a natural way and it was a sight to see. BPBM 281025

FILE NO:

ASSIGNMENT:

DATE:

Arca ventricosa Lamarck, 1819

281026 2/4/63, star mill, kapaau, dead in a tidal pool. BPBM 281026

281027 found at nishimura bay on 12/ 13/ 63, alive.

281028 (~~Label missing~~) ~~xxx~~ mixed container of bivalves  
Hawaii; Mahukona; Nishimura Bay; Black Pt. ?  
8 valves.

281039 Hawaii; Mahukona; "Molasses Wharf" in shallow water  
"Found Sept. 6, 1964, in shallow waters dead, at an area  
known as the molasses wharf, Mahukona."  
label w/ *Pinctada radiata* BPBM 281038

281040 Mahukona lighthouse, 5' water, in a crack,  
alive. April 1962  
label w/ other Bivalves BPBM

Barbatia (Acar) divaricata (Sowerby, 1833)

281029 HAWAII: Mahukona; Nishimura Bay; Black Point; Kawaihae  
Collected by Kenji Yokoyama 1958; 6 April 1986

Naumea juddi

Dall, Bartsch, & Rehder, 1938

281030

281041

Mahukona lighthouse, 5' water, in a crack, alive  
April 1962

Among other bivalves.

Utena bella (Conrad, 1837)

281031

281032

12/13/63, Nishimura Bay, alive.

copy of label w/this and other spms.

281042

Mahukona lighthouse, 5' water, in crack,  
alive April 1962

Trapezium oblongum (Linnaeus, 1758)

malacology label

BPBM 281033

Hawaii; Mahukona; Nishimura Bay; Black Pt.;  
Kauaihae; Kenji Yokoyama 1958; 6 April 1986  
[KENJI YOKOYAMA COLLECTION]

Trapezium Californicum, Conrad. 1837. March 1965 H.S.N.

BPBM 281034

10/3/65, mahukona lighthouse, 12' water, dead.

BPBM 281035

Nishimura bay, nov. 11, 1902.

Chama istoma Conrad 1837

BPBM 281051

6/25/67, mahukona lighthouse, 12' water

Isognomon perna (Linnaeus, 1767)

BPBM 281052

Upolu, near the airport live taken Jan. 20, 1963 on top of  
a high rock in a small crack. BPBM 281052

Modiolus matrix (Pilsbry, 1921)

BPBM 281036

HAWAII: Mahukona; Nishimura Bay; Black Point;  
Kauaihae; Kenji Yokoyama 1958; 6 April 1986  
[KENJI YOKOYAMA COLLECTION]

Malacology label. Original labels (2) with  
other spms.

Malleus regula (Forstkal, 1775)

BPBM 281037

Ibid. (Same as BPBM 281036)

Rinetada radiata (Leach, 1814)

BPBM 281038

Found Sept. 6, 1964, in shallow waters dead, at an area known as the molasses wharf, mahukona. BPBM 281038 (see also BPBM 281038)

Pinctada margaritifera (Linnaeus, 1758)

BPBM 281150

<sup>BPBM 281150</sup>  
This black lip oyster shell was found at Black Point, Makahona in about 18 feet of water. It took me 2 dives to dislodge it. 6-21-87 was the date I found this shell.

I saw about 8 octopus that day. Unbelievable. I left them all back in the ocean, not bothering them at all. I also saw a large Nohu whale I left alone too.

I really thank GOD for giving me this beautiful shell. And I really am thankful I am still able to go down, in spite of my being very tired afterwards.

BPBM 281151

This black lip oyster shell was found on September 2, 1984 at Black Point, Makahona in about 8 feet water dead and pretty well covered with Calcium material in and out. After cleaning, it is a presentable shell. I really thank GOD for giving me this beautiful shell.

BPBM 281151

Spondylus

BPBM 281152

Spondylus shell: This shell was found a little past Iwahashi Bay, mahukona on april 19, 1964 in about 15 feet water, exposed and dead and broken when found. Something must have eaten the animal in this shell. The color on this shell is very red on the outside with short spines in some parts of the shell. It is a colorful shell and the species if found alive, must be something to see. I speared 3 large octopus that day, making this day a very wonderful day. BPBM 281152

FILE NO:

ASSIGNMENT:

DATE:

Pinnidae Dreptopinna saccata (Linnaeus, 1758)

Atrina vexillum (Born, 1778)

BPBM 281153

10/3/71 Mahakona lighthouse in about 6'  
water, alive. BPBM 281153

BPBM 281154

1-4-87. Dead point, Mahakona Shoreline

FILE NO:

ASSIGNMENT:

DATE:



Harpa amouretta Röding, 1798

BPBM 281155

7-20-86, Bolthead Makuhana, Shachis BPBM 281155

BPBM 281156

3-1-87 Bolthead Makuhana, Shachis, I think  
GOD for giving me this shell. BPBM 281156

BPBM 281157

2-24-91, Tabral's place, Makuhana  
shell here after rough weather.  
BPBM 281157

Harpa major Röding, 1798

BPBM 281158

This conoidalis harp shell was found  
at hapuna beach, kawaihae, on may 6, 1961  
in about 14 feet of water in a sand pocke  
t. The sand there is dirty. Though this  
shell was dead when found and is in poor  
condition, I am keeping it, because I do  
not have another specimen. I went with  
kwangi that day, and he found a dead cy-  
prea scurra that was in good shape.  
BPBM 281158

BPBM 281159

Harpa conoidalis: Dead found with noth  
g in it on 8/14/66 Old Landing, Upolu,  
15' water. Although this shell is in  
pretty bad shape, the color is still  
good enough to make the shell distinguish-  
able. Although this shell was dead, the  
area it was in was coral surrounding, with  
slight sand patches. And though the shell  
may have been "pushed" from deep water,  
it surprised me to find it where it was.  
BPBM 281159

Tonna pernix (Linnaeus, 1758)

BPBM 281160

Found Oct. 3, 1982. Big Keans, Mahukona, 12' water, dead. I really thank GOD for giving me this beautiful shell. BPBM 281160

BPBM 281161

2-7-88, Black point Mahukona. Shoreline BPBM 281161

BPBM 281162

11-29-81, Near Black Point, Mahukona about 18 feet water, hermit crab inside. BPBM 281162

BPBM 281163

This tun shell, which is about 5 inches in length, was found at High Wall, Mahukona on 7-11-76 in about 18' water, dead in a sand pocket. The top portion is damaged and the anterior area too. Still, it is a beautiful shell, and I thank GOD for giving me this shell. BPBM 281163

BPBM 281164

Tun shell Found 6-19-83, Nishimura Bay, Mahukona, live, 18' water, exposed. I really thank GOD for giving me this shell. BPBM 281164



